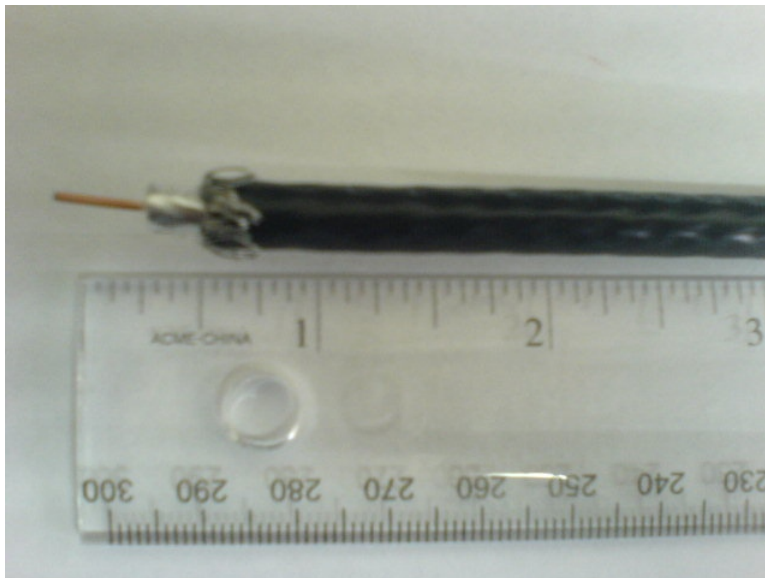


Proper Connectorization of RG-6 Cable

1. Using proper cable stripper, strip off proper length. If no stripper:
 - a. Take ¼ inch jacket, braid, dielectric, off cable leaving centre conductor exposed. Ensure you don't scar the centre conductor or leave braid wrapped around centre conductor which will cause a short.
 - b. Then take ¼ inch of jacket off, leaving braid exposed



2. Fold braid back over jacket, ensure no braid has been left wrapped around centre conductor.



3. Push connector onto cable. Approximately 1/8 inch of centre conductor should stick out past end of connector barrel.



4. The dielectric should be flush with bottom of connector barrel (should not stick thru or be below).



5. Crimp connector with proper crimpers.